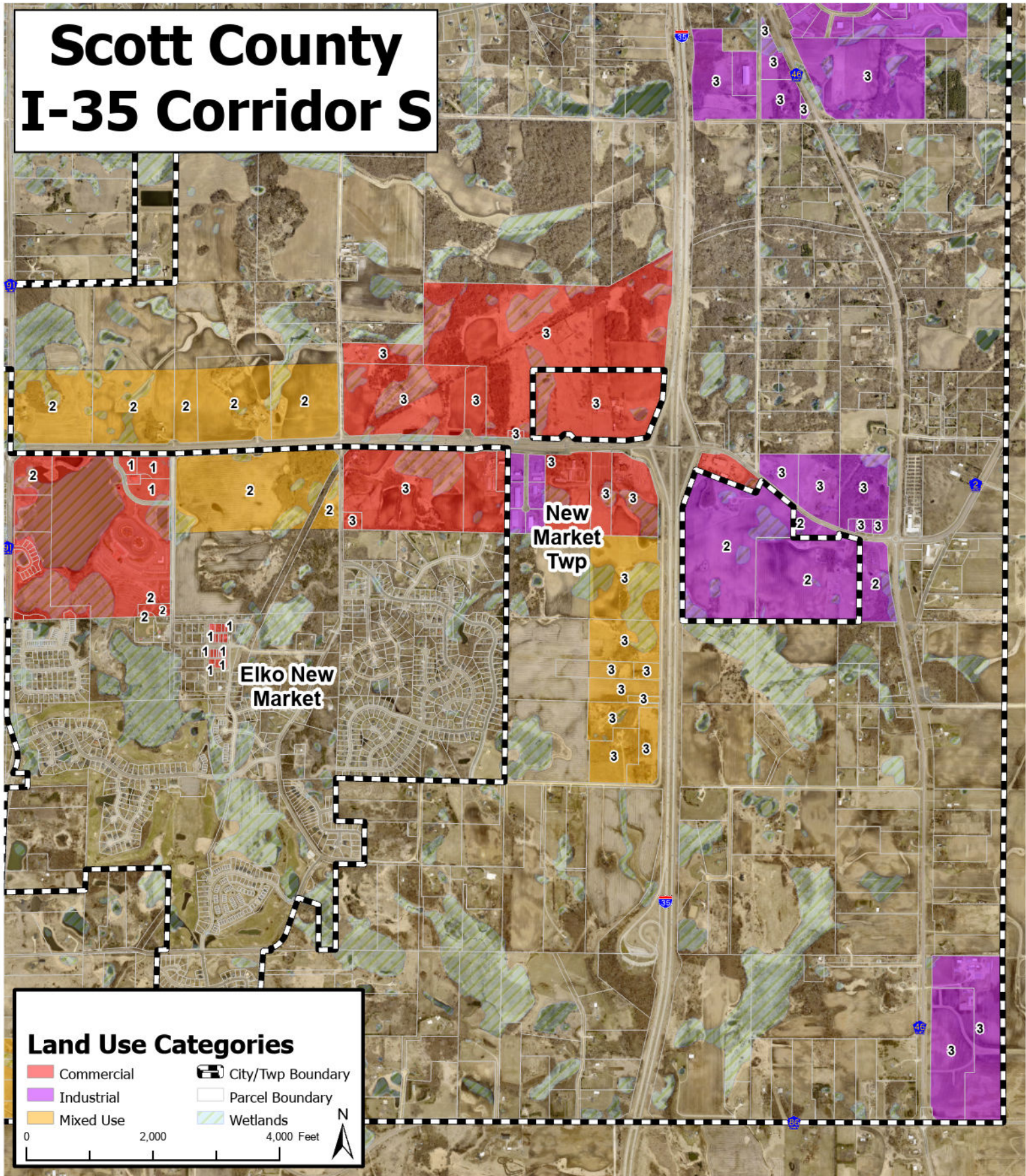


Scott County I-35 Corridor S



Scott County Commercial/Industrial Parcels

* Properties with #'s are vacant:
CLASS 1 - Platted and "Pad Ready". Building Permit/Site Plan Approval
CLASS 2 - Public Infrastructure Readily Available
CLASS 3 - Guided for Commercial/Industrial Use on Locally Adopted Land Use Map