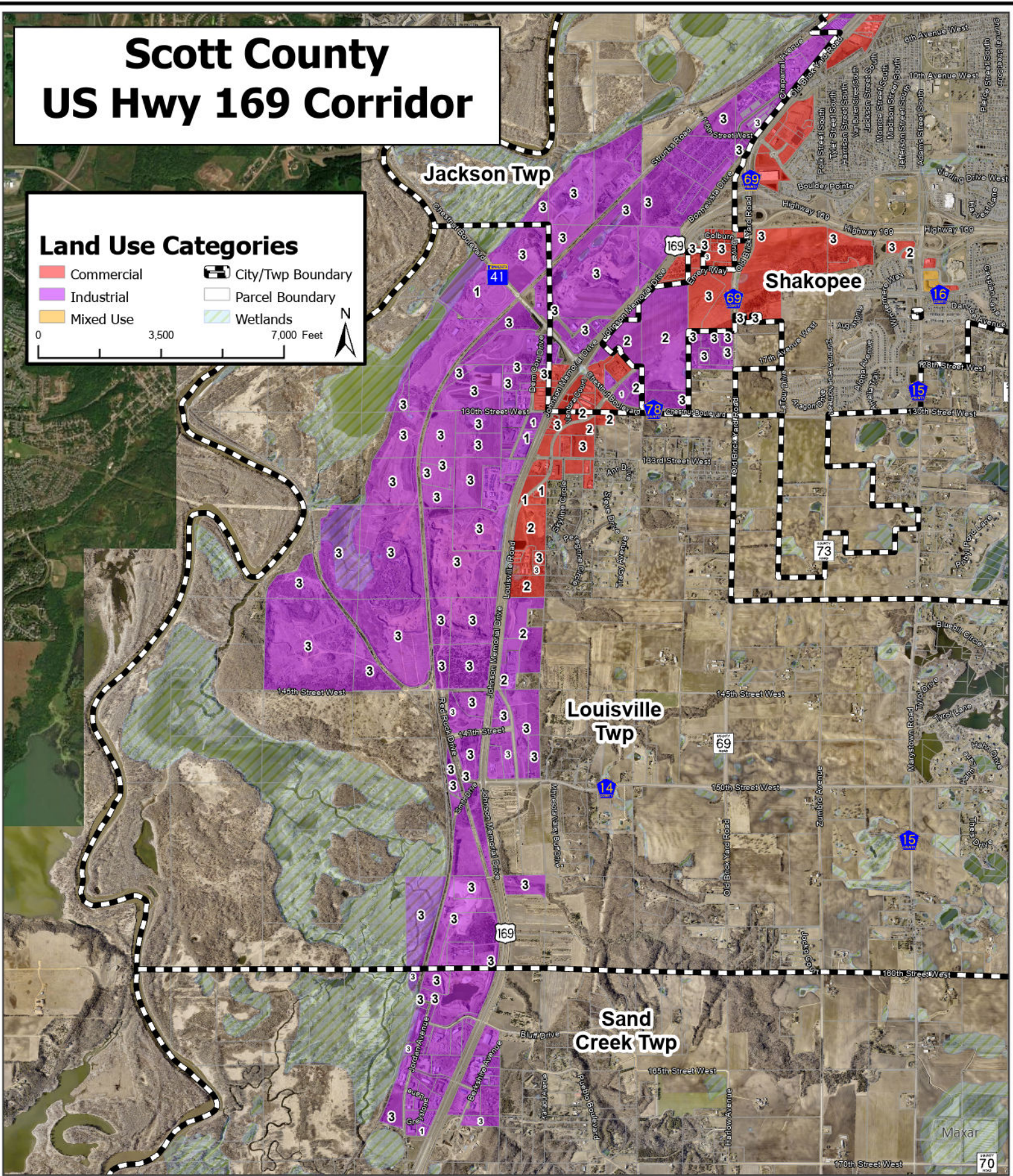


Scott County US Hwy 169 Corridor

Land Use Categories

- Commercial
- Industrial
- Mixed Use
- City/Twp Boundary
- Parcel Boundary
- Wetlands

0 3,500 7,000 Feet



Scott County
Commercial/Industrial Parcels

* Properties with #'s are vacant:
CLASS 1 - Platted and "Pad Ready". Building Permit/Site Plan Approval
CLASS 2 - Public Infrastructure Readily Available
CLASS 3 - Guided for Commercial/Industrial Use on Locally Adopted Land Use Map