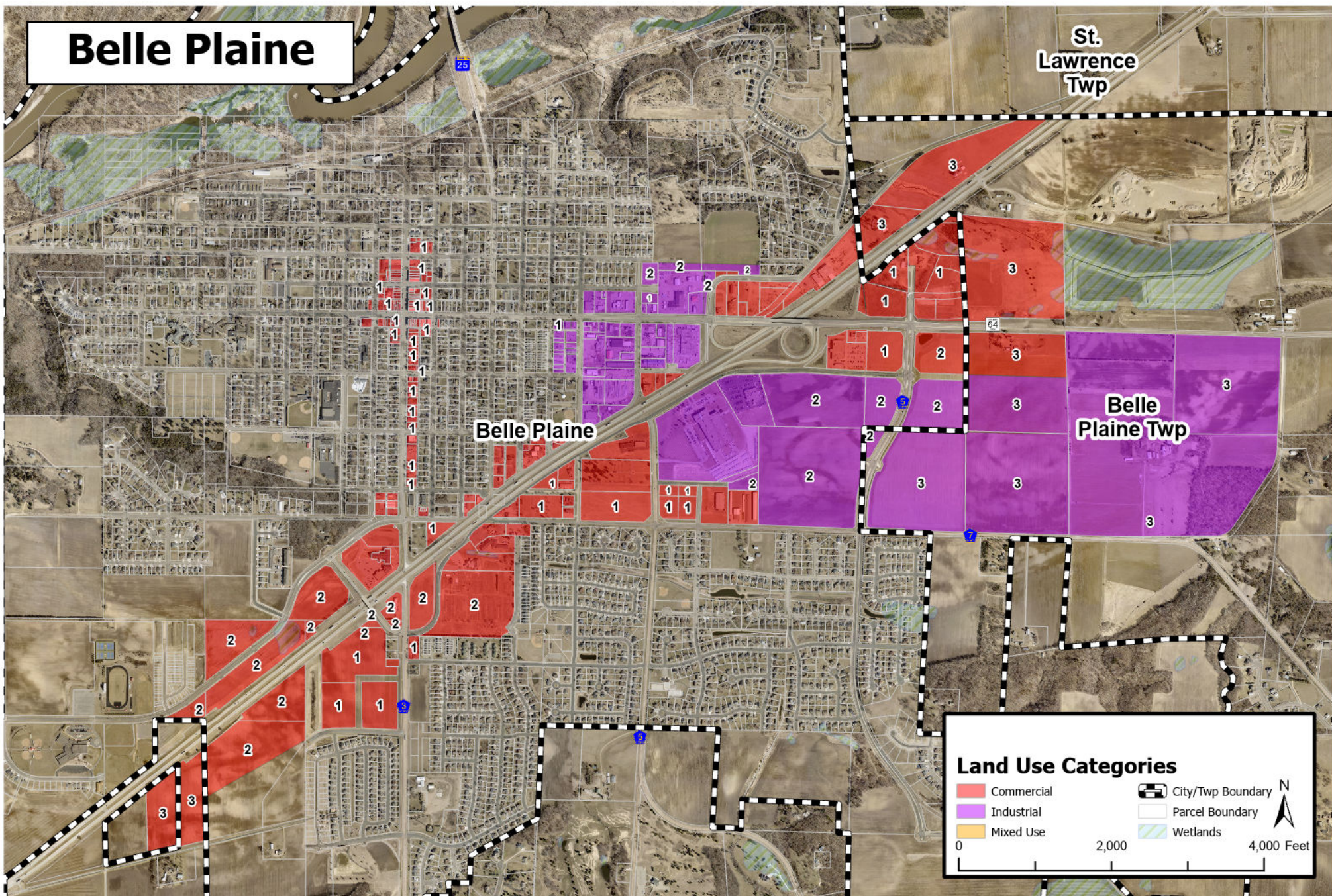


# Belle Plaine



## Scott County Commercial/Industrial Parcels

\* Properties with #'s are vacant:  
**CLASS 1 - Platted and "Pad Ready". Building Permit/Site Plan Approval**  
**CLASS 2 - Public Infrastructure Readily Available**  
**CLASS 3 - Guided for Commercial/Industrial Use on Locally Adopted Land Use Map**