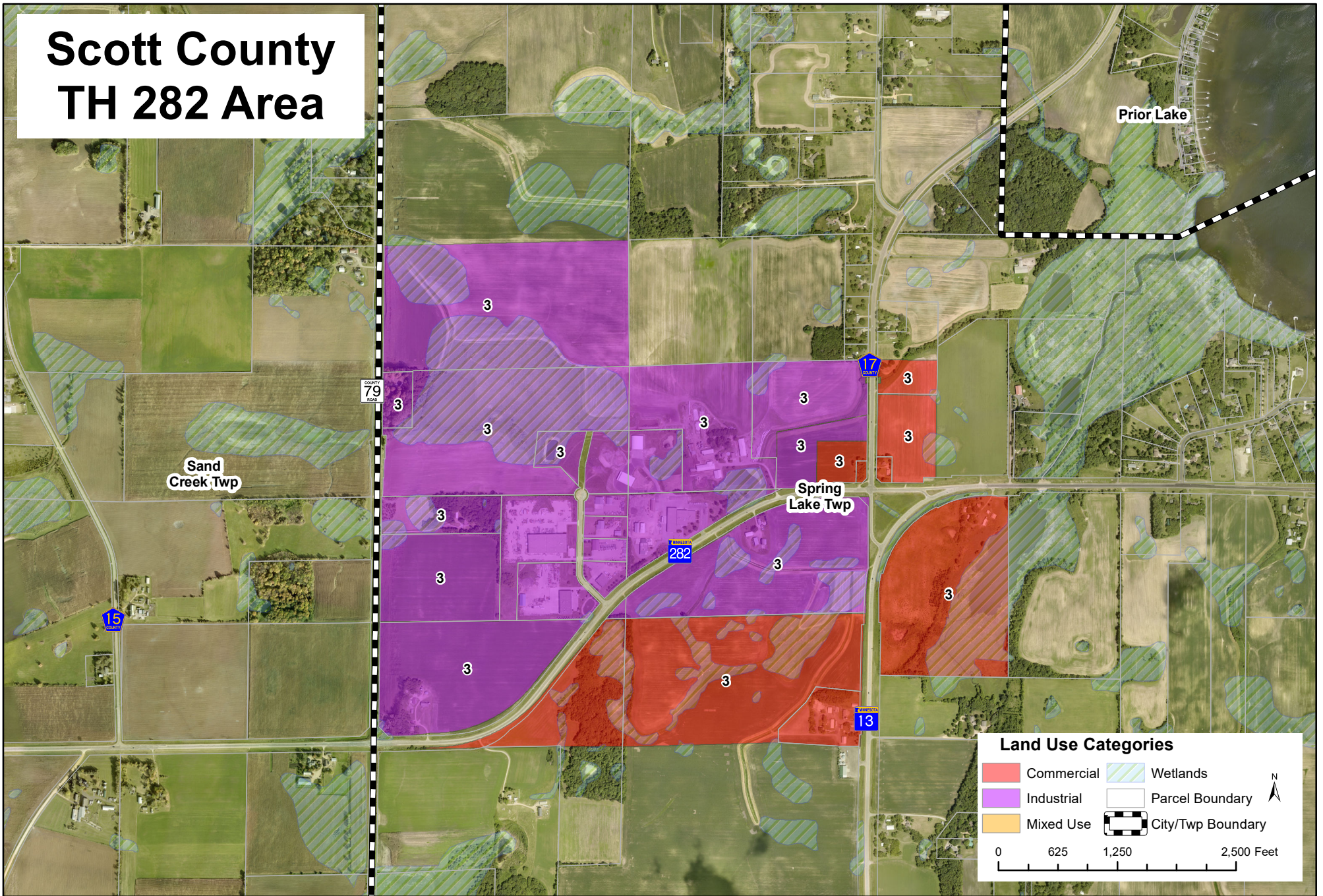


# Scott County TH 282 Area



## Scott County Commercial/Industrial Parcels

\* Properties with #'s are vacant:  
 CLASS 1 - Platted and "Pad Ready". Building Permit/Site Plan Approval  
 CLASS 2 - Public Infrastructure Readily Available  
 CLASS 3 - Guided for Commercial/Industrial Use on Locally Adopted Land Use Map