







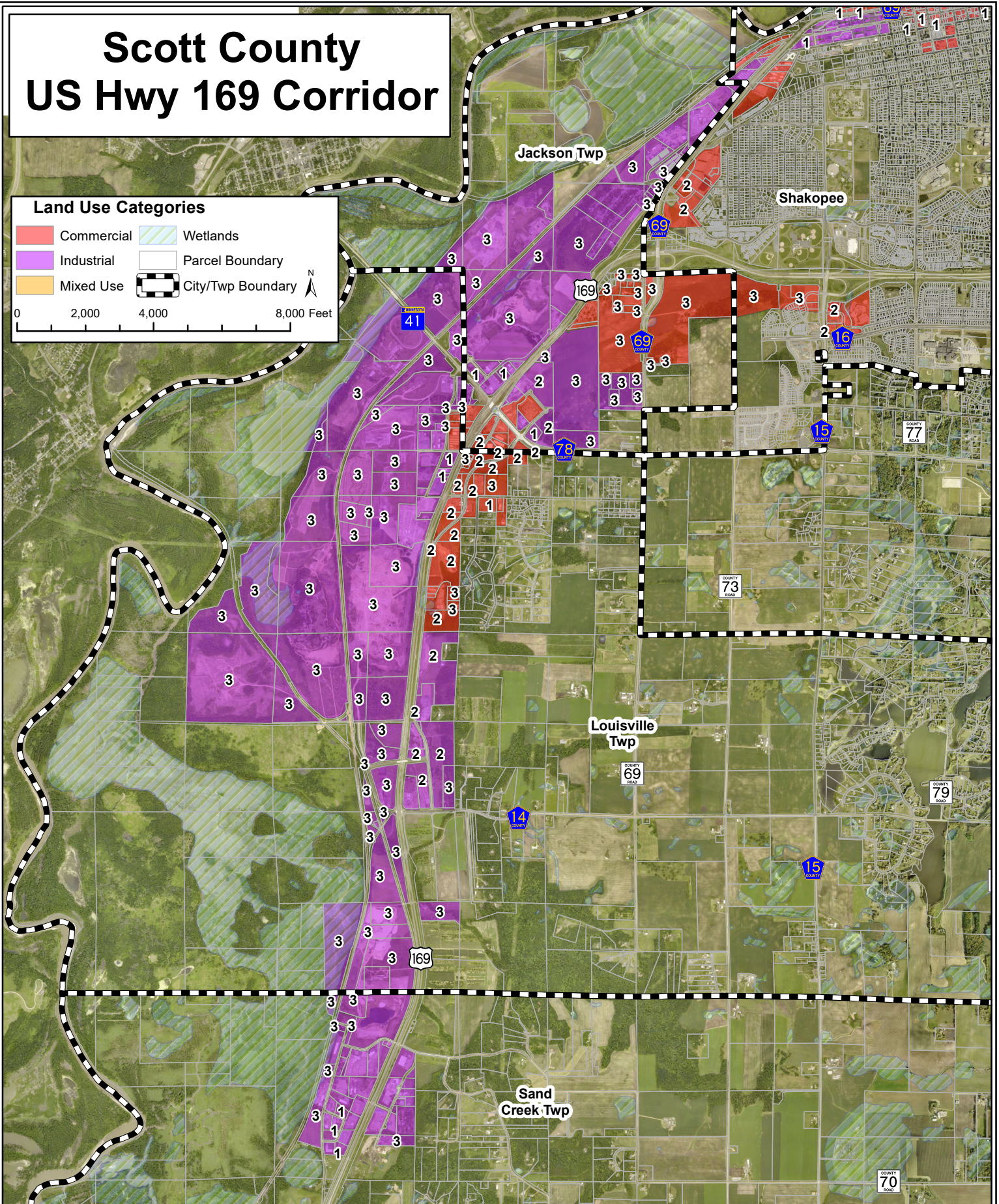
Scott County US Hwy 169 Corridor

Land Use Categories

 Commercial	 Wetlands
 Industrial	 Parcel Boundary
 Mixed Use	 City/Twp Boundary

0 2,000 4,000 8,000 Feet

N



Scott County Commercial/Industrial Parcels

* Properties with #'s are vacant:
 CLASS 1 - Platted and "Pad Ready". Building Permit/Site Plan Approval
 CLASS 2 - Public Infrastructure Readily Available
 CLASS 3 - Guided for Commercial/Industrial Use on Locally Adopted Land Use Map