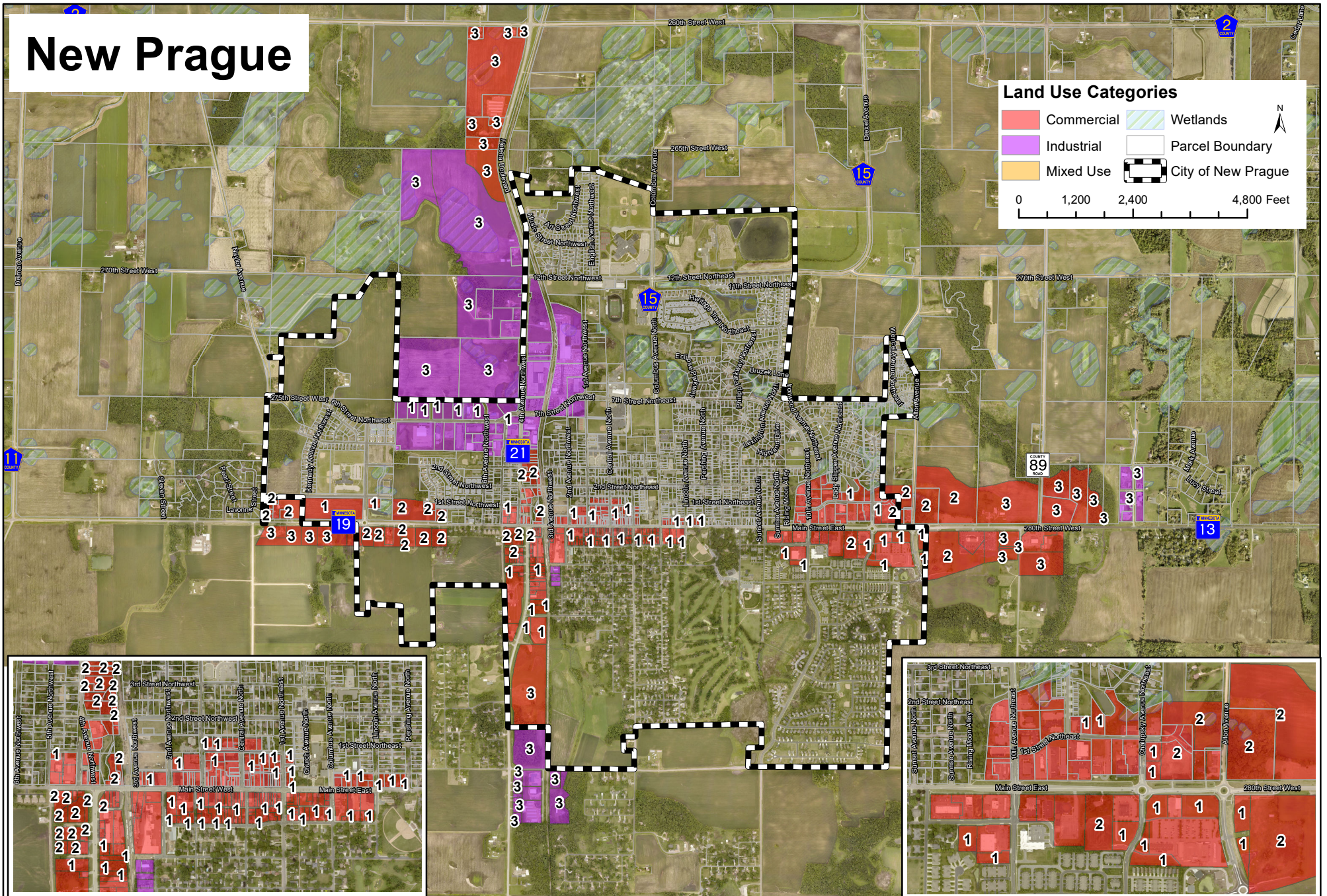


# New Prague



**Land Use Categories**

<span style="display:inline-block; width:15px; height:15px; background-color:red; border:1px solid black;"></span> Commercial	<span style="display:inline-block; width:15px; height:15px; background: repeating-linear-gradient(45deg, transparent, transparent 2px, lightblue 2px, lightblue 4px); border:1px solid black;"></span> Wetlands
<span style="display:inline-block; width:15px; height:15px; background-color:purple; border:1px solid black;"></span> Industrial	<span style="display:inline-block; width:15px; height:15px; border:1px solid black;"></span> Parcel Boundary
<span style="display:inline-block; width:15px; height:15px; background-color:yellow; border:1px solid black;"></span> Mixed Use	<span style="display:inline-block; width:15px; height:15px; border: 2px dashed black;"></span> City of New Prague

0 1,200 2,400 4,800 Feet



## Scott County Commercial/Industrial Parcels

- \* Properties with #'s are vacant:
- CLASS 1 - Platted and "Pad Ready". Building Permit/Site Plan Approval
  - CLASS 2 - Public Infrastructure Readily Available
  - CLASS 3 - Guided for Commercial/Industrial Use on Locally Adopted Land Use Map