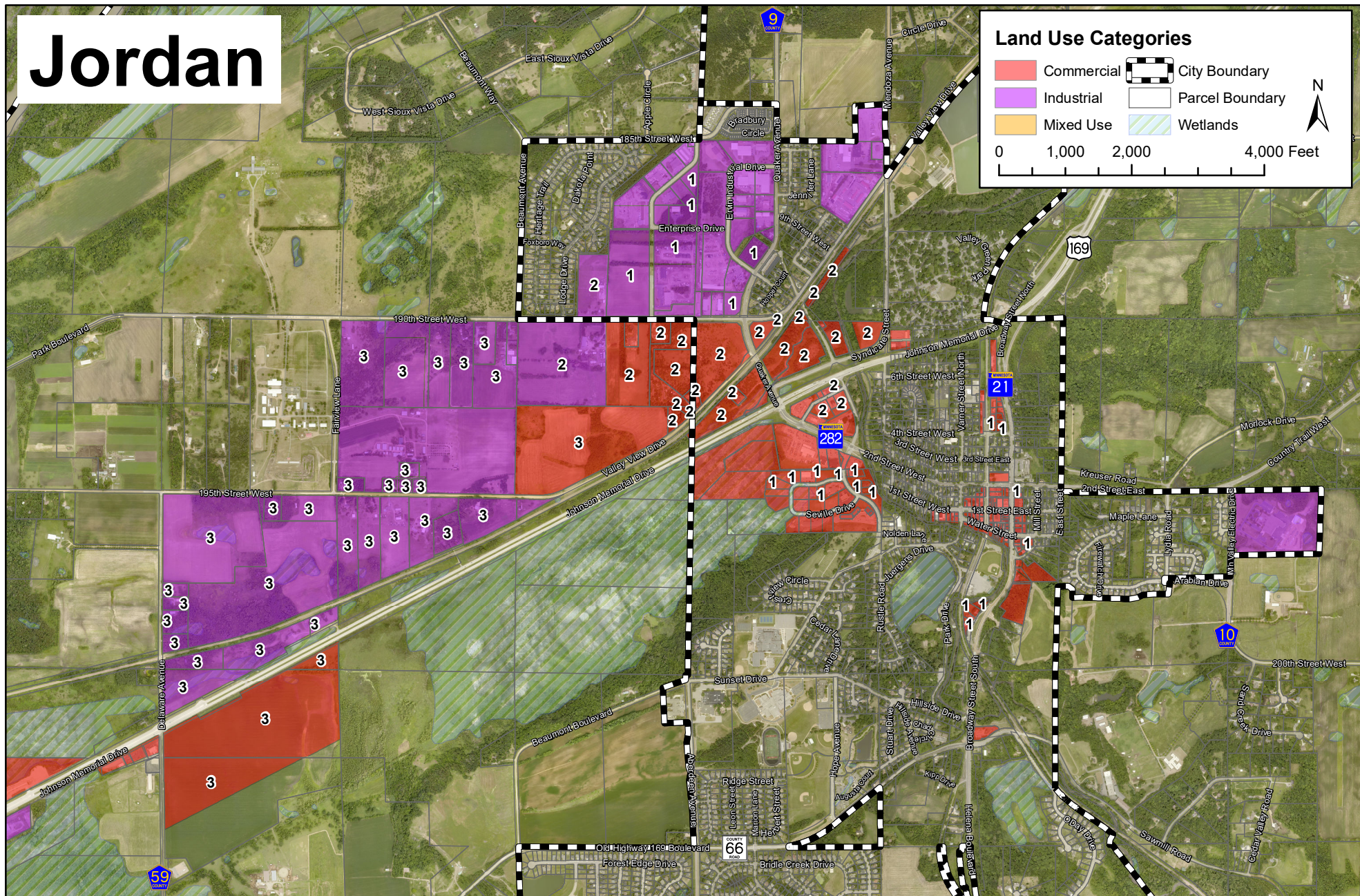


Jordan



Land Use Categories

 Commercial	
 Industrial	
 Mixed Use	

0 1,000 2,000 4,000 Feet



Scott County Commercial/Industrial Parcels

- * Properties with #'s are vacant:
- CLASS 1 - Platted and "Pad Ready". Building Permit/Site Plan Approval
- CLASS 2 - Public Infrastructure Readily Available
- CLASS 3 - Guided for Commercial/Industrial Use on Locally Adopted Land Use Map