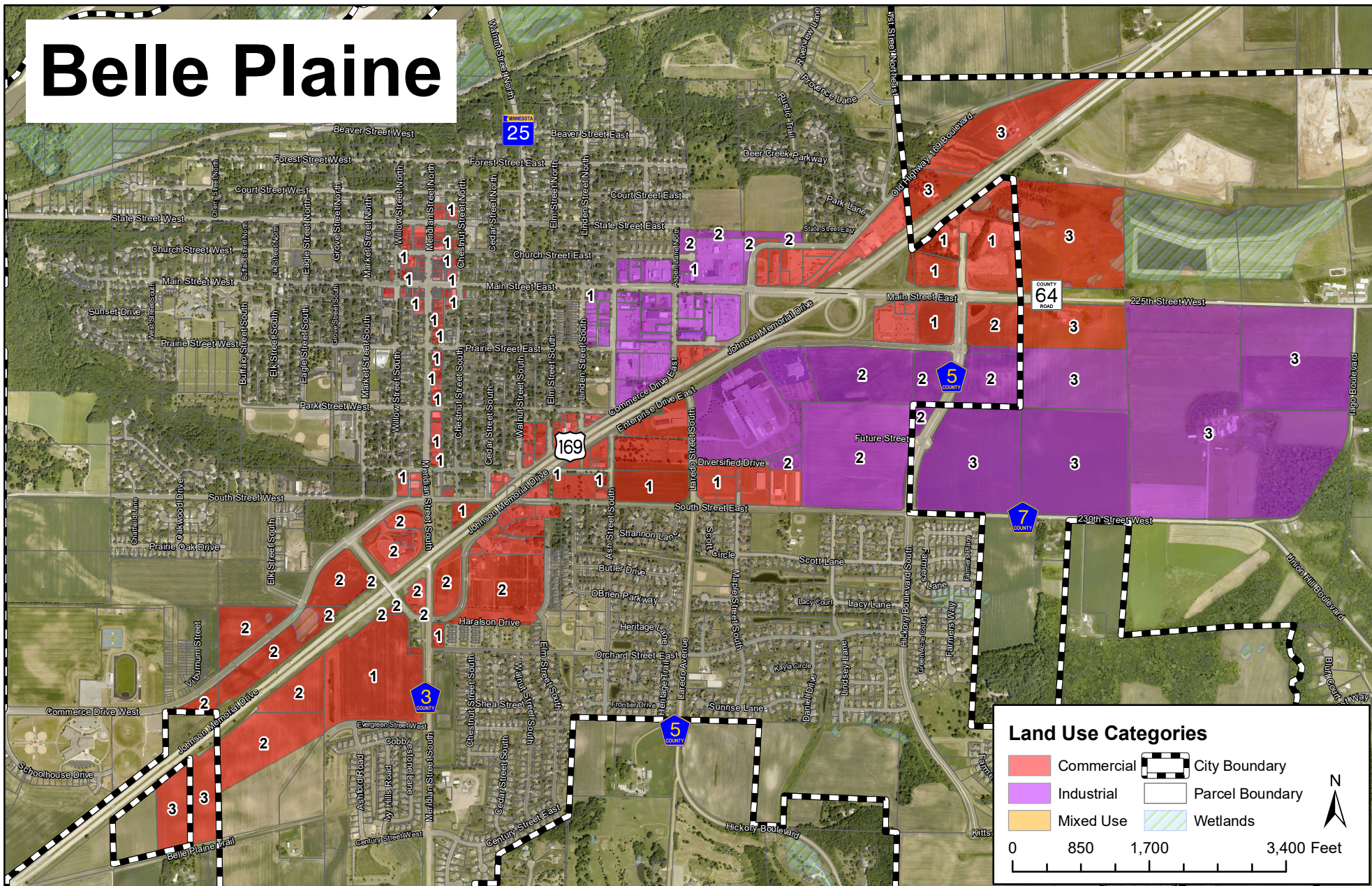


# Belle Plaine



## Scott County Commercial/Industrial Parcels

\* Properties with #'s are vacant:  
**CLASS 1** - Platted and "Pad Ready". Building Permit/Site Plan Approval  
**CLASS 2** - Public Infrastructure Readily Available  
**CLASS 3** - Guided for Commercial/Industrial Use on Locally Adopted Land Use Map